

# SOFIA and HST Multi-wavelength study of the Symbiotic Mira HM Sge

Steven Goldman<sup>1,2</sup>, Ravi Sankrit<sup>2</sup>, Nicole Karnath<sup>1</sup>, Ed Montiel<sup>1</sup>, Matthew Richter<sup>3</sup>

<sup>1</sup> SOFIA-USRA, NASA Ames Research Center, MS 232-12, Moffett Field, CA 94035, USA

<sup>2</sup> Space Telescope Science Institute, 3700 San Martin Drive, Baltimore, MD 21218 USA

<sup>3</sup> Department of Physics, University of California Davis, Davis, CA, USA



February 27, 2022  
steven.r.goldman@nasa.gov



STScI | SPACE TELESCOPE  
SCIENCE INSTITUTE

# Observations

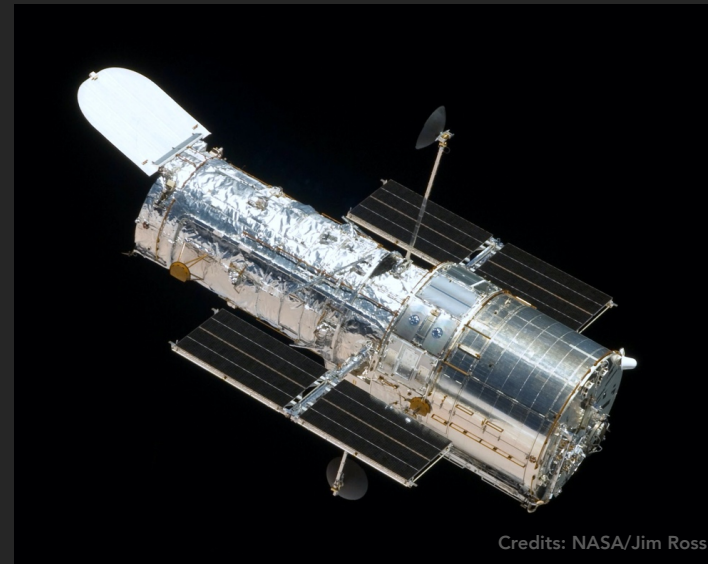
## SOFIA observations:

- dust and the kinematics



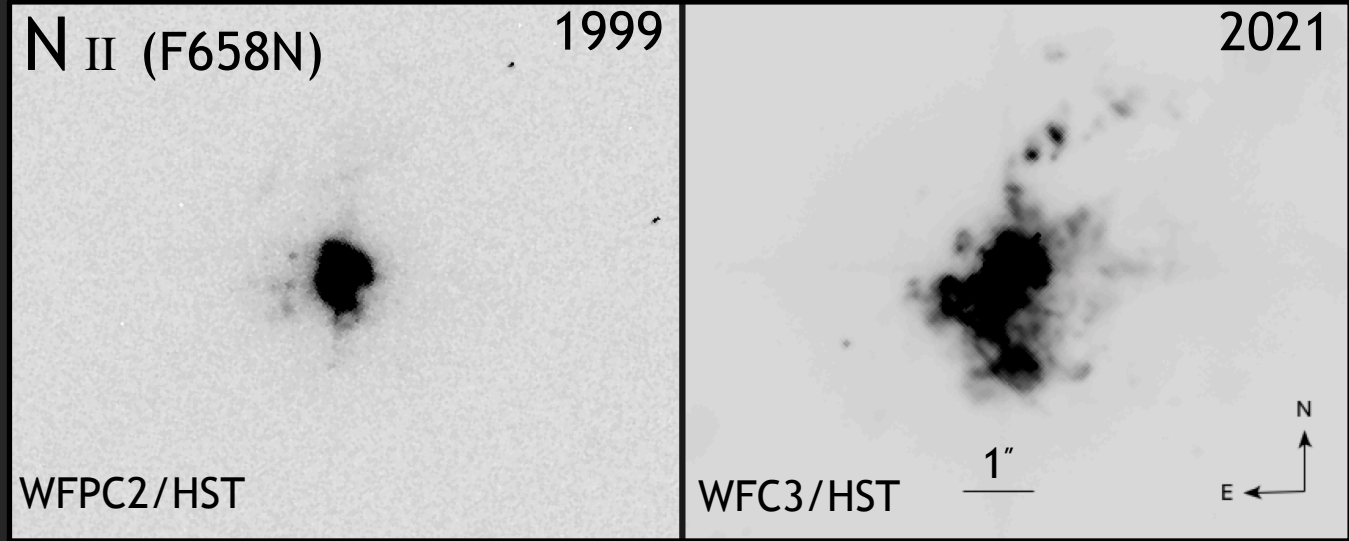
## HST observations:

- map the gas in the inner nebula
- probe the shocked emission.

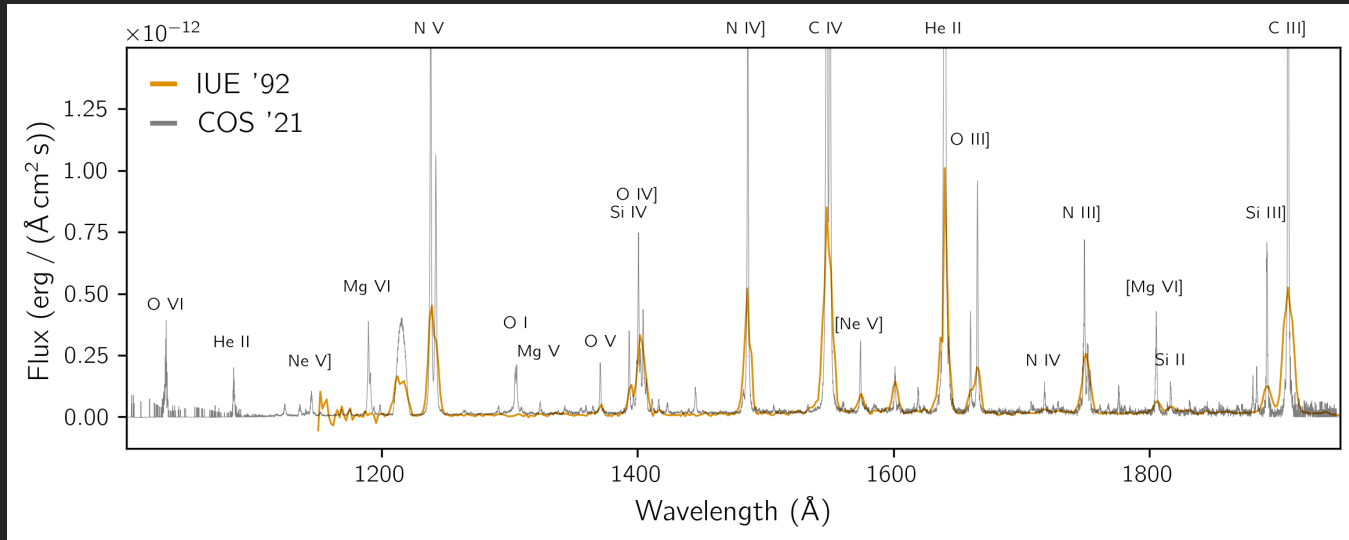


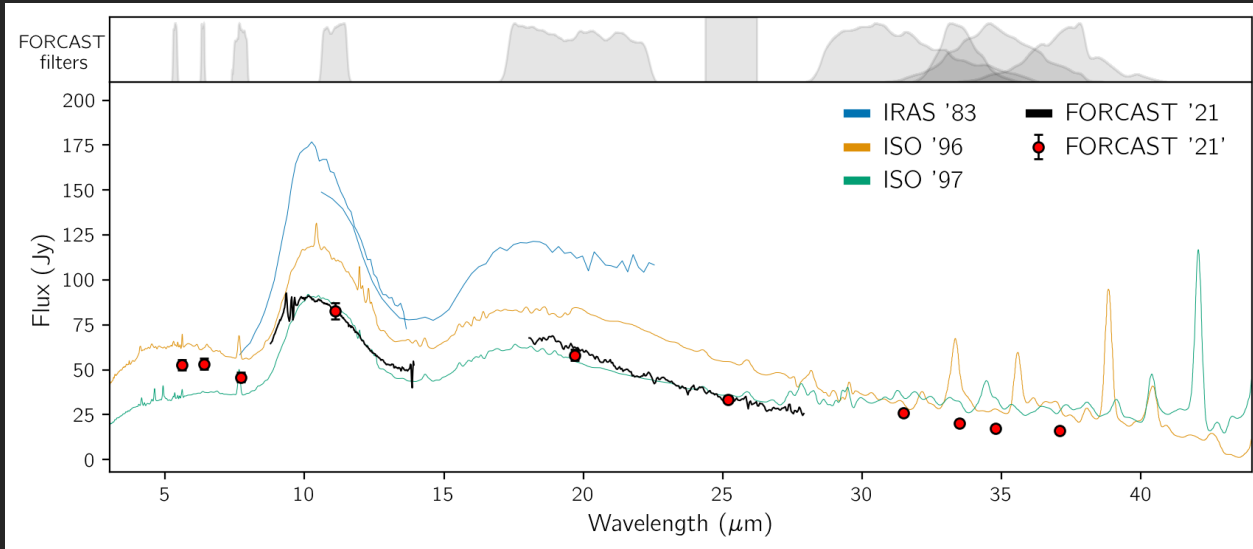
Credits: NASA/Jim Ross

## WFC3

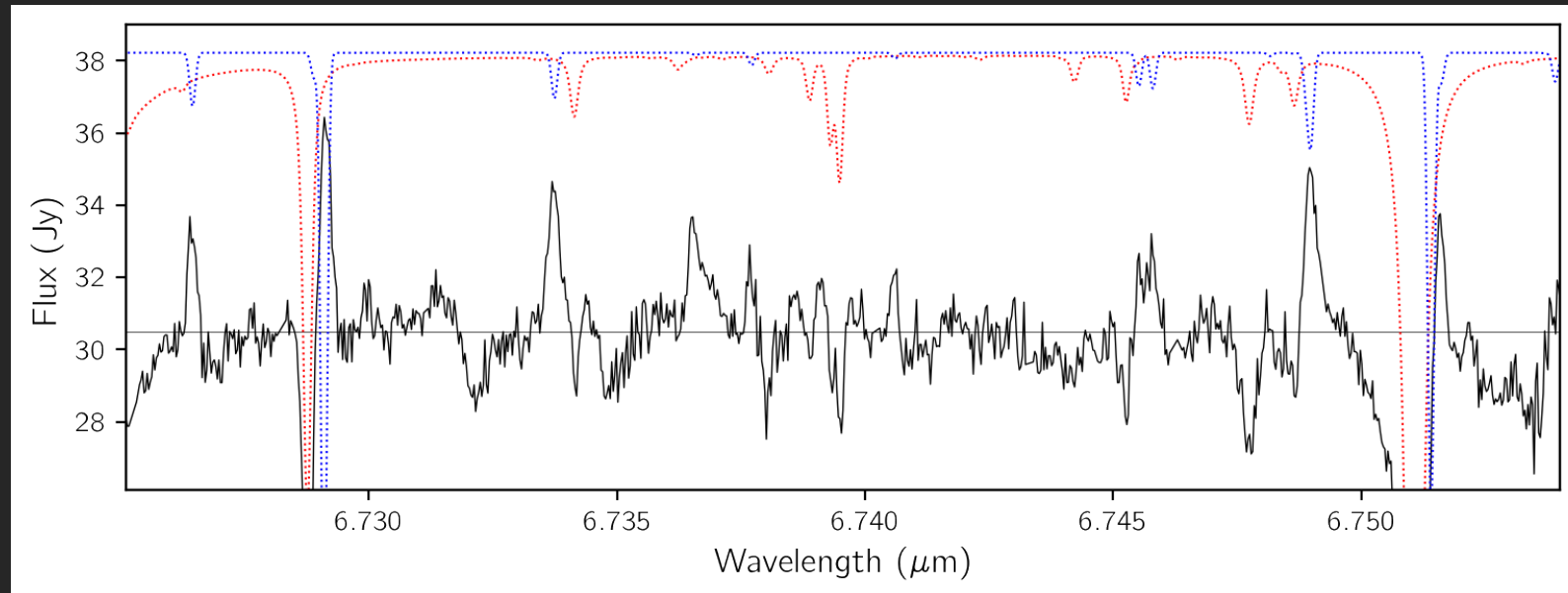


## COS





## FORCAST



## EXES